

CONFERENCE & EVENTS  
Jurys Inn Cheltenham

## WELCOME TO Jurys Inn Cheltenham

Our flexible range of 11 meeting and function rooms makes us an ideal venue for hosting small or large conferences and special events.

Following a multi-million pound investment, our hotel has been completely transformed and boasts refurbished meeting rooms with stylish new interiors.

We can comfortably accommodate up to 400 delegates and our central and accessible location makes us one of the most convenient conference venues.

## Conference and Events

Boasting our largest suite that can accommodate up to 400 delegates, Jurys Inn Cheltenham is the perfect location to host your large conference or event.

Our large meeting space is multi-functional, giving you the option to have 3 rooms facilitating between 75 – 230 delegates or our largest suite with the ability to seat 400 delegates in theatre style. We also boast a number of syndicate rooms of various sizes to support your large event.

### EXECUTIVE SUITE

Our largest ground floor conference room has been transformed with stylish new interiors. The Executive Suite is multi-functional, accommodating up to 240 cabaret style.

### OUR FACILITIES ARE SUITABLE FOR:

- Large conferences for up to 400 delegates
- Fundraisers
- AGMs
- Exhibitions
- Training Events
- Team Building Events
- Association and Club Events
- Private Parties

From the latest equipment to freshly brewed tea and coffee and flexible food and drink menus, you'll find everything you need to make your meeting or event a success.



Reception



Cabaret in Executive Suite



# Social Banqueting

Jurys Inn Cheltenham is the perfect location to host your social evening event or corporate function.

Our experienced and dedicated team will assist in arranging every detail of your event, from décor and catering to live entertainment.

### WE SPECIALISE IN:

- Large Gala Dinners
- Charity Fundraisers
- Award Ceremonies
- Black Tie Events
- School Proms
- College Balls

### EXECUTIVE SUITE

Our largest ground floor conference and event room is the premier venues for gala balls, charity events and celebrations and can accommodate up to 320 guests for banquets. The Executive Suite has built in screens and projectors and also has its own private bar.



Social Banqueting in Executive Suite

# What We Offer

Here at Jurys Inn Cheltenham, we provide the space, style and attention to detail that you want and expect. Our dedicated Meetings team will ensure your event runs smoothly and our largest function room has the benefit of being on the ground floor.

### OUR MEETING AND EVENT ROOMS INCLUDE AS STANDARD:

- LCD projection screens and plasma TVs
- Complimentary WiFi
- Air conditioning
- Flexible space
- Water Coolers

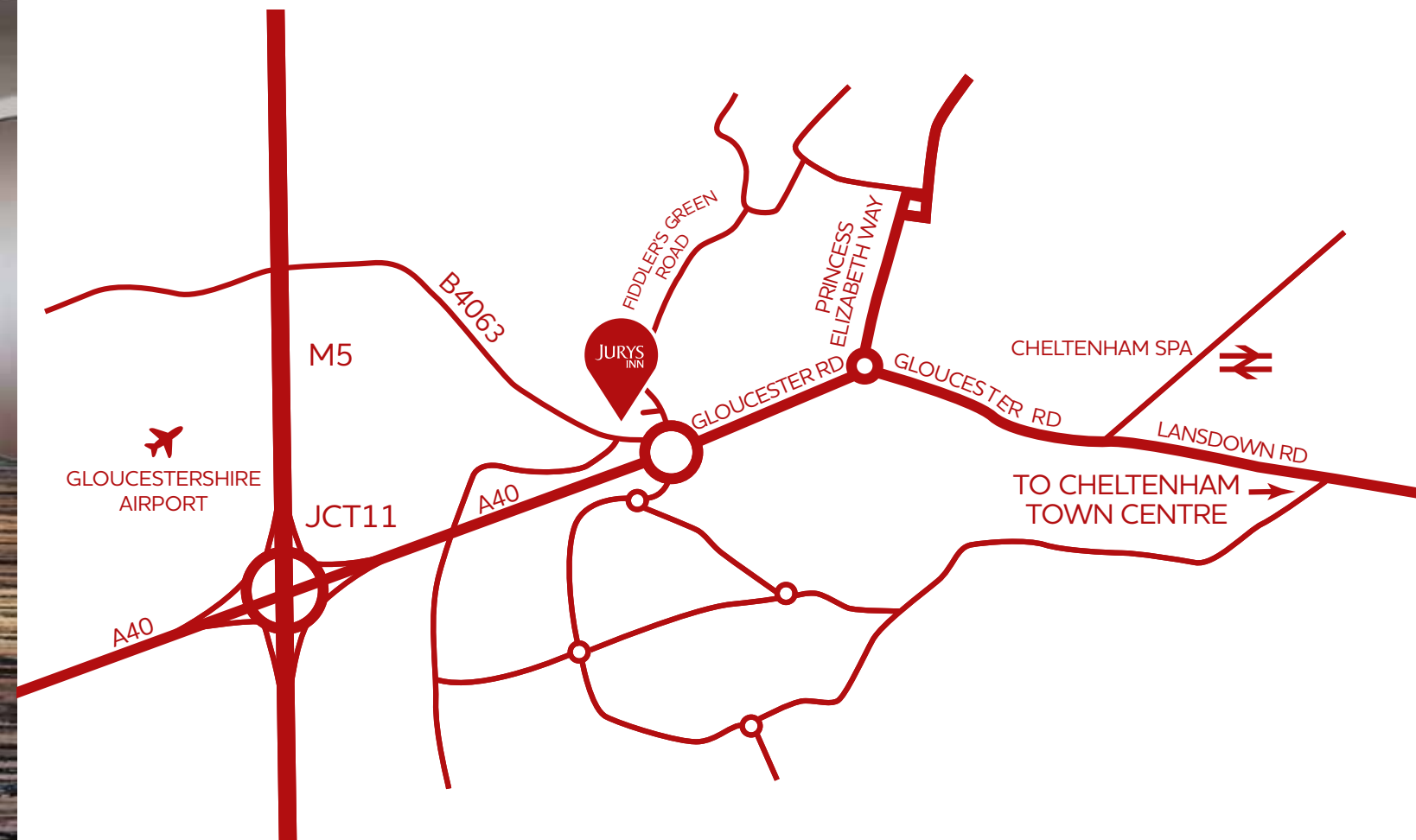
Supported by our dedicated team who will ensure your meeting or event is a success.

# Location

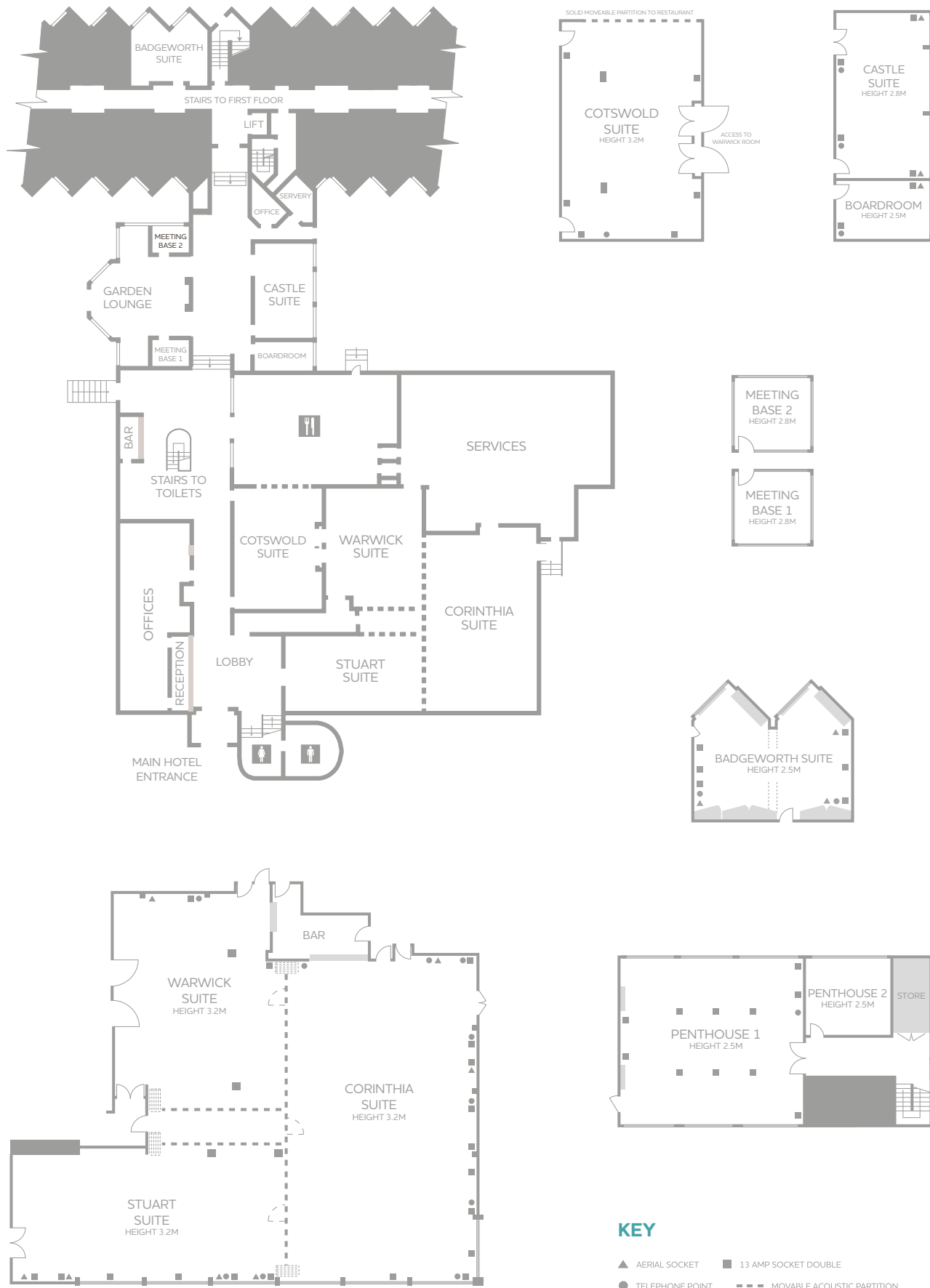
Located off the M5, Jurys Inn Cheltenham is the perfect location to host your meeting or event.

### LOCATION HIGHLIGHTS

- Just off M5 at junction 11
- Excellent access to A40/M40 motorway
- 1 hour from Bristol Airport and Birmingham International Airport
- 2 miles from Cheltenham Spa Railway Station
- 200 complimentary car parking spaces available on site



# Floor Plans



# Room Capacities

	Theatre	Theatre (Back Projection)	Classroom	Boardroom	U-Shape	Cabaret (Full rounds)	Cabaret (Half rounds)	Banquet	Dinner Dance	Length (m)	Width	Height	Controls in Room	Tungsten	Dimmers	Blackout	Natural Light	3 Phase	Air Conditioning	Free WiFi
Executive Suite	400	350	180	90	90	240	180	320	300	31.9	19.1	3.2	✓	-	✓	-	✓	-	✓	✓
Corinthia Suite	230	180	64	50	58	96	72	150	130	17.2	9.98	3.2	✓	-	✓	-	✓	-	✓	✓
Warwick Suite	75	-	45	40	35	40	30	60	50	11.4	9.1	3.2	✓	-	✓	-	-	-	✓	✓
Stuart Suite	100	50	40	30	30	56	35	80	70	14.7	7.32	3.2	✓	-	✓	-	✓	-	✓	✓
Cotswold Suite	60	-	40	30	30	48	30	50	30	11.5	8.23	3.2	✓	-	✓	-	-	-	✓	✓
Boardroom	8	-	-	8	-	-	-	-	-	5	3.05	2.8	✓	-	-	-	✓	-	✓	✓
Castle Suite	40	-	20	22	20	21	18	-	-	8.6	5	2.8	✓	-	✓	-	✓	-	✓	✓
Badgeworth Suite	30	-	16	14	12	21	18	-	-	8.25	4.24	2.8	✓	-	-	-	✓	-	✓	✓
Meeting Base 1	-	-	-	5	-	-	-	-	-	3.46	2.27	2.8	✓	-	-	-	-	-	✓	✓
Meeting Base 2	-	-	-	5	-	-	-	-	-	3.46	2.27	2.8	✓	-	-	-	-	-	✓	✓
Penthouse 1	40	-	27	20	30	32	20	-	-	8.95	8.3	2.5	✓	-	✓	-	✓	-	✓	✓
Penthouse 2	8	-	4	6	-	-	-	-	-	4.2	3.58	2.5	✓	-	-	-	✓	-	✓	✓

- KEY**
- ▲ AERIAL SOCKET
  - 13 AMP SOCKET DOUBLE
  - TELEPHONE POINT
  - - - MOVABLE ACOUSTIC PARTITION



## At a Glance

- 122 newly designed stylish and spacious bedrooms
- 11 state of the art meeting and event rooms
- Burford Restaurant
- Lounge Bar
- Costa Coffee bar
- Juvenate Health and Leisure Club
- Complimentary WiFi throughout
- 200 complimentary car parking spaces available on site



Superior Room



Lounge Bar



Castle Suite



Twin Room



Lounge Bar



Banquet in Executive Suite





Burford Restaurant

Jurys Inn Cheltenham

## Jurys Inn Cheltenham

**For Conference and Event enquiries**

Tel: 0845 525 6338 - Email: [meet@jurysinns.com](mailto:meet@jurysinns.com)

**For all other enquiries, contact the Hotel directly**

Jurys Inn Cheltenham

Gloucester Rd, Cheltenham, GL51 0TS

Tel: 0161 774 2984 - Email: [cheltenham\\_conference@jurysinns.com](mailto:cheltenham_conference@jurysinns.com)